

DIPTFORD AND NORTH HUISH PARISH NEWS

NOVEMBER 2023

No. 634

If you know anyone who would like to receive the Parish News – contact
Val Haddy 01548 821418 or email valjohnhaddy@aol.com

There are many new residents within Diptford Parish – who are all welcome to join the mailing list
for the Parish News – find out what is going on in the village and come and
join in this vibrant community

REMEMBRANCE SUNDAY SERVICE



St Mary the Virgin Church

Diptford TQ9 7NY

Sunday 12th November at 10.50 am

A collection will be taken for the

Royal British Legion

All are Welcome



QUIZ TEAMS



Miss Inga Brain



Noah Idea



I Noitall



Don Key

FOR DIPTFORD ANNUAL QUIZ

FRIDAY 17TH NOVEMBER 2023

AT DIPTFORD PARISH HALL

7.15^{PM} **PROMPT START**

TEAMS OF FOUR £6 ENTRY PER TEAM

***Please bring your own nibbles and drinks
and a prize for the raffle***

Contact: Ham on 01548 821419

Would YOU like to add a contribution to the monthly Parish News?

If so, contact Val Haddy on valjohnhaddy@aol.com

or Sue Franklin on sue@jassy.org.uk

DIPTFORD PARISH LANDS ELEEMOSYNARY CHARITY

Diptford Parish Lands Eleemosynary Charity

We would like to make you aware that there are funds available for people living in the parish of Diptford to access in times of need.

Confidentiality Guaranteed

Contact: Cllr Peach, Cllr Crocker & Cllr Hill

DIPTFORD W I REPORT

Another interesting W I meeting in October when our informative and entertaining guests arrived in their full official regalia, Les and Liz Ellis have been Town Crier and Consort of Dartmouth since 2007.

Les found himself in his role a couple of years after stepping in at a local event to help a poorly friend. More than 16 years on, with awards for best Town Crier and best regalia (never "uniform") under his very fancy waistcoat he is still ringing the bell for Dartmouth. The Town Crier has been around in this country and all over the world for centuries, originally carrying out duties to safeguard and inform the community. Now a very different role there are still 200 towns in the UK with a Town Crier with more in Devon than any other county.

Following our September talk, a Certificate has been received from Devon Air Ambulance for donations totalling £90.

DFWI Quiz at Ipplepen on 27th January from 2 to 4pm. Whether to enter a team to be discussed at next meeting but remember our teams only go for the tea – not the glory!

FUTURE EVENTS

8th November Owens Coffee. Trying hard to get at least 10 people interested to make cost acceptable.

Meeting 13th November our speaker will be Jackie Juno, billed as Devon's answer to Pam Ayres. This will be an open evening so bring a friend.

25th November Advent Fair. Discussed various matters to help it go well including, help on the day, advertising, approaching local businesses who may be willing to donate raffle prizes, cake making, tombola and raffle prizes. Thank you for prizes donated so far.

30th November Bath Christmas Market.

Tuesday 12th December 12 for 12.30 Christmas lunch at Brookside Cafe and Restaurant in Bovey Tracey. Menus have been distributed to those at Monday's meeting.

2024

8th January film evening showing My Sailor My Love. Passed by the censor board (aka Juli and Val) as suitable viewing 😂😂.

24th February soup and sandwiches.

11th March meeting speaker from Firesafe.

8th April meeting final WI AGM, social evening with Beetle Drive.

Ladybirds

13th May inaugural meeting will be a cheese and wine evening.

Suggestions for Speakers, activities and outings, as advised in previous emails and more are welcome. Subscriptions will be collected in February or March and will be £25 for the first year. Meetings will be in the evening as now to begin with but we will have afternoon meetings from 2.30pm to 4.30pm starting September or October through to March inclusive.

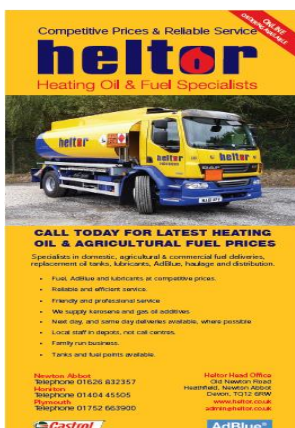
JOIN US AT OUR NOVEMBER OPEN MEETING WHEN ALL WILL BE WELCOMED

Meeting 13th November SPEAKER Jackie Juno, billed as Devon's answer to Pam Ayres. This will be an open evening so bring a friend, enemy, stranger..... all welcome.





DIPTFORD AREA OIL CO-OPERATIVE



Heltor in Newton Abbot are now our supplier of choice for the Oil Co-Operative and are proving to be reliable and better matching the original brief we had with Watsons. They are prepared to support the group need for regular top up or fixed amount deliveries at competitive pricing. Basically the arrangement we originally had with Watsons.

Also to support sporadic urgent requests that sometimes arise with group members, without ridiculous spot charges/prices.

Please see flyer attached or website www.heltor.co.uk for more details. I am monitoring and agree prices, as previously, to ensure we retain the lowest possible pricing.

If you are interested in joining the Diptford Oil Co-Operative please contact Steve Hill on 01548 821272 or email mr.sjhill@yahoo.co.uk

Hedgehogs have been very active, leaving their calling cards all around the garden. They are feeding well to put on fat stores for winter. Signs of snail shells being demolished, but have not actually seen them in the garden! The really warm session has passed through in the second week of the month. Windy and rainy conditions prevailed for a week. What will winter hold in store for us this year?

The sparrows have not appeared in the large numbers that showed the colonies were doing well. What has happened? The Sparrow Hawk cannot surely have taken so many? Have they been struck down with an illness? There do not seem to be as many birds or species visiting the garden. Has bird flu decimated their numbers? No evidence of dead or dying birds!

Trees beginning to display good colour for autumn, but then the rains and wind struck. Roads carpeted with leaves of all colours. Soggy, wet colourful leaves being turned brown with tyre action. Then washed away with the rains.

Went to Lukesland, north of Ivybridge, to see the trees preparing for autumn, but they had not achieved their full potential colours. Hopefully, they will have held onto leaves to make the full display by the end of the month? Discovered abundant varieties of Lichens, Fungi and Algae on the vegetation and granite rocks. *Parmelia perlata* grows on trees and rocks, especially in the west of Britain, and forms large, light-grey patches, with rounded lobes which often have black 'hairs' at the edge. This form was quite prominent, especially on the rocks. Also, many different types of Lichens showing how clean the air is on the edge of the moor. Fascinating grey-green 'beards' of lichen hanging from branches. Spectacular bracket fungus, some mere pin-cushions others as large leather-like halfmoon purses from the main trunks. In the garden the wind has blown tall plants around and flattened the last of the runner beans in spite of the bamboo supports. Miscanthus grasses have blown over, Cosmos have snapped off at the branched joints and many clumped perennials have lost their supports and splayed out. Blossom has been ripped off by the wind and rain. Despite this 'devastation' the garden still has retained its shape and form, and there is colour to be seen in late flowering plants; Red Schizostylis Coccinea, Wild Fuchsia both red and white species, and Guernsey lilies. Some Roses are still flowering despite the wet conditions. The yellow Calendulas have continued to flower, as have the pink and red Begonias.

In the hedgerows the bracken has turned brown as it 'dies back', blackberries have finished long before Halloween, generally the wet conditions have played havoc with the seasonality of the wild plants. Loose branches and twigs have snapped off and fallen to the ground. A few trees, weakened by drought, have fallen over. The promising Autumnal colour has not met full expectations this year, but many leaves have clung on, changing colour, giving a minor display. With the drabness of mist and rain the hedgerows and copses looked dark and foreboding. Is this indicating the winter to come?

There are compensations. The flies are not so prolific invading the house. Butterflies, especially the Cabbage Whites have taken a rest, so there were not quite so many caterpillars turning the cabbages and other greens into lacework! Daddy long legs hatching from their shelter in the lawn have been swamped, and wasps have retired to their nests or already succumbed to the wintry effects. Hornets that were once so plentiful in the garden, preying on other insects, have become very scarce.

An interesting year of weather records broken, flowers blooming for very short periods, either earlier or later with uncharacteristic seasonality. Some vegetable failures, others grew prolifically.

NORTH HUISH COMMUNITY GROUP

Invite you to attend a short
ACT OF REMEMBRANCE
On Armistice Day
Saturday 11th Nov. 2023
In North Huish Church

Please arrive by 10.50

In support of the
Royal British Legion

For further details please email
northhuishchurch@hotmail.com



ST MARY'S CHURCH DIPTFORD



Diptford Church has a happy band of volunteers to help decorate the Church with floral arrangements.

We would like a few more people to call on.

If you would like to help – no experience necessary, you would be most welcome.

It does not have to be on a regular basis, just as and when you are able.

Please get in touch with Mary Sams if you are able to assist.

01364 72435

Diptford St Mary's Church Bells 2023.

Be prepared for some 'noise' on Friday evenings! The Church Bells will ring out again! Please come along and contribute to the heavy metal 'music'. Watch this space for dates and times.

Cheers,

Ham Sampford (01548 821419) [Captain]

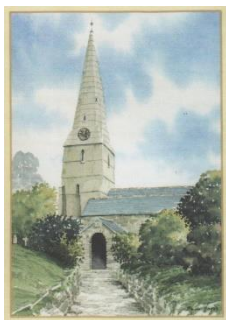
November 2023 Garden Notes.

The leaves are falling now and the garden is beginning to take on its winter clothes. Although there is always plenty to do at this time of the year, it really is a matter of getting on with things when you are able to do so, because the weather is not always suitable. Never try to get onto the soil when it is wet as you are likely to do more harm than good. Compaction of the soil is so easy to do, leading to poor drainage and water-logging. Even so, do not use this as an excuse to do nothing! If you are able to work steadily throughout the next few months it will make life much easier next year. At least try to cover the bare soil with some of that wonderful compost you made during the year. It will help the drainage and give your friends something to work on during the winter. Try the 'no dig' approach!

How about a bit of work to tackle for the month?

- ❖ Continue to collect leaves for composting [black sacks, puncture with holes, & stack somewhere out of sight, gorgeous leaf mould should be the result!].
- ❖ Plan out your beds & order seeds.
- ❖ Shred all clean prunings & old herbaceous material.
- ❖ Don't forget to cover filled compost bins to let them 'work' over winter.
- ❖ Thoroughly clean & oil all tools after you have finished using them.
- ❖ Have any mechanical machines serviced after you have finished using them.
- ❖ Finish clearing up last year's displays. Finish planting out biennials.
- ❖ Prepare beds for next year's displays. Fork over & incorporate manure or compost, but don't bury it! It might be useful to cover with polythene or cardboard to stop weed growth.
- ❖ Have you cleaned all pots, trays & containers not being used for winter displays?
- ❖ Now is the time to complete the planting of tulip bulbs, & garlic.
- ❖ Lift & divide autumn flowering snowdrops!
- ❖ Heel in bare-rooted trees & shrubs as they arrive, to be planted out in final positions later.
- ❖ When the weather & soil conditions allow plant out new fruit trees & bushes. Put the upright stake in before you plant or put it in at 45 degrees against the wind, to stop 'rocking'
- ❖ Carry out formative pruning on new trees & bushes.
- ❖ Remove any secondary growth that occurs after summer pruning of trained fruit.
- ❖ Check stored fruit. Make some jam from that fruit in the freezer!
- ❖ Have you cleaned & disinfected the greenhouse?
- ❖ Protect plants from frost if necessary. Initially just offer protection for part of the greenhouse.
- ❖ Finish insulating the greenhouse. Check the heater is working!
- ❖ Water carefully & sparingly, when necessary, on suitable days ventilate the greenhouse.
- ❖ Mow when conditions are right & not too closely. Have you finished scarifying & spiking [aerating]?
- ❖ Keep the lawn free from leaves & debris! Scatter any wormcasts if they appear.
- ❖ Turf new lawns on previously prepared ground.
- ❖ Remove, clean & store any reusable plant supports.
- ❖ Finish lifting & dividing any clump-forming plants.
- ❖ Sow seeds in pots; sweet peas etc.
- ❖ You will have finished preparing beds for next year by the end of the month!
- ❖ Have you tried taking hard-wood cuttings? Pencil sized cuttings, easiest with 'currants'.
- ❖ Complete the first pruning of roses just to take the tallest growth off to stop the winter wind rocking the plants!

Enjoy the season with scones, cream & jam a cup of tea or something stronger. Zephyrus



CHURCH CLEANING

Would you like to keep our lovely Church sparkly?

You will be very welcome to come along to

St Mary's Church, Diptford

Saturday 4 November and Saturday 2 December

From 9.30 am til 11 am

Steve Partridge is now organising our cleaning sessions

partridge.steve@btinternet.com

St Mary's Diptford

Help with Brass Cleaning- would you like to help and be added to the Brass Rota? Clean a piece of Brass in your time; this would be for Christmas and Easter only.

Please contact Val Haddy on 01548 821418 to be added to the rota Thank you.

Diptford with North Huish Parochial Church Council

Are looking for a Treasurer, if interested please contact Rev D. Sayle
01548 821199 for details



Friends of Diptford School (FODS)

Sharing school news with the Parish

Xenia Ball Chair of FODS xlball28@gmail.com

We have our FODS Spooky Disco on 3rd November – see below. FODS will have a stall at the Christmas advent fair on 25th November where children can decorate a Christmas biscuit.

We will also be holding a Christmas jumper swap at the end of November ready for Christmas jumper day.

On the 3rd November will be the school's Spooky Disco at Diptford Village Hall.

FODS 🎃 👻 👻 👻 🎃 👻 **Spooky Disco**

Friday 3rd November

3.20-4.45pm Diptford Village Hall

- **Fancy dress optional**
- **Tuck shop!**

(Bring some change -All items 50p or less)

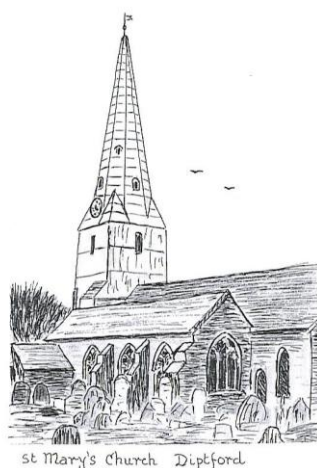
- **Hot dogs- please preorder by Friday 20th October**
All ages welcome

Reception and preschool pupils must be accompanied by an adult.

FODS volunteers are available to escort children to the village hall for Years 1-6. Parents (years 1- 6) if you require this please can you firstly liaise with another parent or FODS volunteer- then confirm with the school office who will be collecting your child from the school gate.

Date and Liturgical Colour	05.11.2023 ALL SAINTS SUNDAY	12.11.2023 REMEMBRANCE SUNDAY	19.11.2023 2nd before Advent	26.11.2023 CHRIST THE KING
Diptford with North Huish	11am Morning Prayer 4.30pm Brick Church	10.50am Service of Remembrance	11am Morning Prayer	11am Holy Communion
Ermington	11am Holy Communion	10.50am Service of Remembrance	11am Holy Communion	11am Family Service
Harberton	9.30am Holy Communion	9.30am Service of Remembrance	9.30am Holy Communion	9.30am Morning Prayer
Ugborough	9.30am Morning Prayer	9.30am Holy Communion 10.50am Act of Remembrance	9.30am Morning Praise	9.30am Holy Communion 4.30pm Messy Church
Halwell	As Above	10.50am Act of Remembrance	As Below	As Below
Harbertonford	As Above	As above	3.30pm Evening service	As Above
Moreleigh	As Above	As above	As Above	3.30pm Holy Communion

Further information can be found on the Mission Community website www.3rivers.org.uk or at www.achurchnearyou.com/8942



The Ex-Dairy Farmer



OVEN READY

SLOW MATURING, FREE RANGE

Chickens & Ducks

now available all year round

Discounts for larger orders

Sausages usually available

Text/Telephone

ROB 07929160071

stanboroughfarm@hotmail.com

*Great for a family Sunday roast
and topping up the deep-freeze*

TOTNES TV & ELECTRICAL

Established 1992

APPLIANCE REPAIRS . AERIAL INSTALLATION

ELECTRICAL CONTRACTING . PART 'P'

REGISTERED

TESTING & INSPECTIONS . CERTIFICATION .

P.A.T. TESTING

ANDY GARNER / CHRIS HATCH

103d High Street, Totnes Devon TQ9 5SN

Domestic Installer

Tel: (01803) 867298

EIC NIC

hmad architects



- Experienced, friendly and local RIBA chartered architectural practice based in Mid Devon, working across the South West.
- Specialising in the adaptation of listed buildings, residential extensions, renovations and low energy design new builds.
- Call Luke McAdam for a chat about your project and how we might be able to help:

**PROUDLY PROVIDED ARCHITECTURAL SERVICES TO THE CHURCH
OF THE BLESSED VIRGIN MARY, RATTERY**

**01392 459777 - MAIL@HMAD.CO.UK
WWW.HMAD.CO.UK**

Sole Care
A Mobile Foot Service



Nail Cutting | Corns | Callus | & More

Providing routine foot care treatment in the comfort
of your own home. Please get in touch for more
information and to book a home appointment.

**Katherine Monk Dip FH MCFHP MAFHP
07881 229691**

SEASONED LOGS FOR SALE

Available in nets or dumpy bags

£5/ net or £110/ dumpy bag

Free delivery to Diptford

Call Graham on 07813 169035

stanboroughpoultry
TURKEYS - GEESSE - DUCKS - CHICKEN

Contact us to order your free-range,
oven-ready Christmas bird:
Give us a call or send us a message
on:

01548 821306 or 07398901768

E-mail:

stanboroughfarm@hotmail.com

**Veg Boxes are also available to order
and collect with your bird, from our pop-
up farm shop**

Find and Follow us on Social Media:
f Stanborough Farm Poultry and Firewood
 stanboroughpoultry

Ian Kirton Plumbing & Heating



077100 94424

01548 821 847

inkirton@btinternet.com

OFTEC registered

for service and installation of oil appliances

General plumbing, heating systems and

bathrooms

Any plumbing jobs considered



MINT MASSAGE



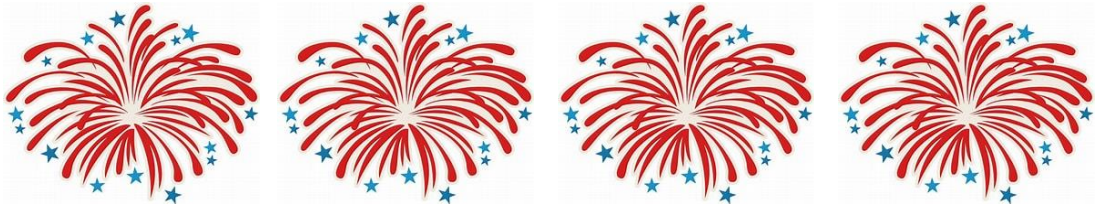
**The Start Bay Studio - Yoga, Field
& Sea, Torcross TQ7 2TG**

**The Stables, Etheridge Farm,
Diptford TQ9 7NQ**

www.mintmassage.co.uk

mintmassage@icloud.com

07967629451



If you want to enjoy fireworks, you can make them less frightening for animals in the following ways:

Going to an organised event will reduce the number of fireworks disturbing animals.

Please only let fireworks off on or around traditional celebration dates (Diwali, Bonfire Night, New Year's Eve and Chinese New Year). ...

Never set off fireworks near livestock, as frightened animals - especially horses - can injure themselves when frightened.

According to the **Animal Welfare Act 2006**, it is illegal to cause any unnecessary suffering to any captive or domestic animal . Therefore, fireworks must not be set off near livestock or horses in fields, or close to buildings that house livestock . If you are planning a firework display in a rural area, it is advisable to warn neighbouring farmers in advance and ensure that fireworks are never set off near your horse's field or stable. You can also tell neighbours and local fireworks display organisers that there are horses nearby, so that they can ensure fireworks are set off in the opposite direction and well away from them .

Social Media in the Village

We have our Village Website www.diptfordvillage.co.uk

Parish Council website www.diptfordparishcouncil.org

Facebook Diptford Sustainable Community

WhatsApp Diptford Support Network

DIPTFORD PLAYING FIELD

At the present time, the Playing Field remains closed to all. The Parish Council has instructed a full safety audit of the Monteray Pine at the entrance and until Council is satisfied that the tree has been made safe, the field has to remain closed.

Similarly, the netting around the tennis court has become dangerously unstable, and Council has received quotes to remedy this together with making improvements to the feet of the Climbing Frame.

Please bear with your Parish Council in the meantime.

COMMUNITY INFORMATION

DIPTFORD PARISH HALL

BOOKING ARRANGEMENTS

TO MAKE A BOOKING FOR DIPTFORD PARISH HALL
Now with NEW CHAIRS and up to date small kitchen!
contact

DiptfordPH@yahoo.com or via the village website www.diptfordvillage.co.uk

Chair of Trustees

Diptford Parish Hall. DiptfordPH@yahoo.com 07944 098174

COMMUNITY NOTICEBOARD

THE NOTICE BOARD IN THE SQUARE IS FOR COMMUNITY NOTICES ONLY

NO COMMERCIAL ADVERTISING WILL BE ALLOWED

WE WOULD ASK ALL ORGANISATIONS NOT TO 'HOG' THE SPACE AVAILABLE

This additional facility is as a result of the first meeting of the Diptford Sustainable Community and
has been installed by Diptford Parish Council
with funding from our County and District Councillors

There is a combination lock – details of which have been given to voluntary organisations within
the village

THE MOBILE LIBRARY

VISITS DIPTFORD EVERY 4 WEEKS

TUESDAYS 10.15 – 10.45

NOTE – Returns on November 21

HIGHWAYS CONTACTS

**To report any Highways problem, either report direct on Devon County
Council website – devon.gov.uk (Report a Problem) or telephone the Call
centre on 0345 155 1004**

**This applies to faulty streetlights, potholes and problems of visibility though landowners
are encouraged to keep road signs on their land clearly visible and to cut roadside hedges
on an annual basis out of the nesting season. There are exemptions from the timing if
there are road safety issues.**

Editor : Mrs Val Haddy, School House, Diptford Tel: 01548 821418

PLEASE NOTE THAT all copy MUST be received before the 25th of the preceding month

Contributions may be submitted by e-mail to valjohnhaddy@aol.com

Contributions subject to change due to availability of space

If you have pictures which could be used in the News – please email to sue@jassy.org.uk

Diptford & North Huish Parish News is published monthly by Diptford Parochial Church Council. Every care is taken in compiling the Parish News and no responsibility can be taken for any action arising from information given therein. All information is believed to be correct at the time of publication.